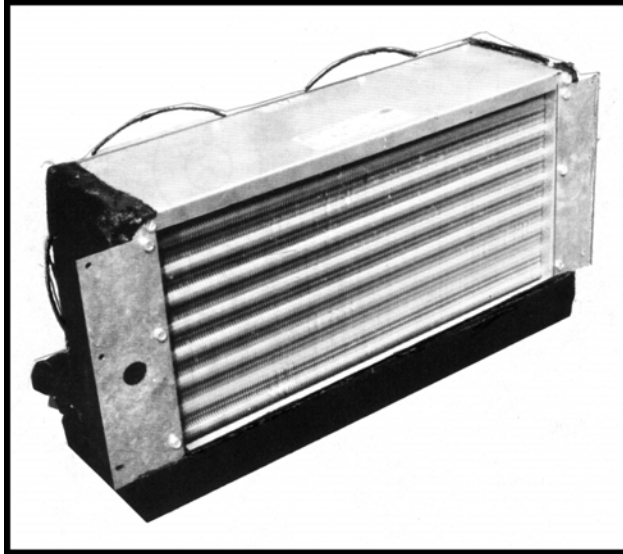


The AQL series cooling / heating units are compact, low profile, high capacity, blow-thru type units designed to be mounted in areas where there is a minimum height restriction. These units are ideal for mounting in the top of a locker, cabinet or closet, or in overhead applications. The unit should be mounted at minimum of 36" from the cabin floor.



**AQL Series**

**Matching Remote Condensing Units**

KH - compatible with AQS1 and AQS3 three knob mechanical controls.  
 KHL - Includes low pressure switch.  
 KHT - compatible with **TW2** Micro-processor control.  
 KHTL - Includes low pressure switch.  
 FH-24 - mechanical control compatible.  
 FHT-24 - TW2 control compatible.  
 AQFH- mechanical control compatible.  
 AQFH-T - TW2 control compatible.

**Standard Features:**

- < Fan coil units in 12 & 16,000 BTU/H (3,024 & 4,032 KCAL/H) sizes.
- < Available in 115-1-50/60 input or 230-1-50/60 input models.
- < Can be used with either cooling only or reverse cycle (heat/cool) systems.
- < High capacity blade type fans are enclosed in a protective guard.
- < Mounting flanges are pre-installed.
- < Dual condensate drain outlets on the drain pan are factory connected into a 1/2" hose barb tee for ease of installation.
- < Antifungal, antishock foam media is installed in the internally corrosion resistant coated drain pan.
- < All external condensate producing surfaces are covered with 1/8" thick foam insulation.
- < Refrigerant line connections are 18" long. Flare fittings with flare nuts are provided.
- < Designed for use with KH, FH or AQFH Series condensing units.
- < Compatible with mechanical (AQS Series) or Electronic TW2 controls.
- < Two year warranty when used with TW2 microprocessor control.

## Technical Specifications

MODEL	Cooling Capacity BTU/H KCAL/H	Air Flow CFM m <sup>3</sup>	Weight LBS KGS	Width IN MM	Depth IN MM	Height IN MM	Amp Draw 115v 230v	Power Watts	Flare Size: SUCTION LIQUID	Return Grill in <sup>2</sup> cm <sup>2</sup>	Supply Grill in <sup>2</sup> cm <sup>2</sup>
AQL - 12	12,000 3,025	400 679	19 42	18-3/4 476	8-3/4 222	10-1/2 267	.6 .3	69	3/8 1/4	120 775	120 775
AQL - 16	16,000 4,032	533 904					.9 .45	104	1/2 1/4		

Add 'C' to end of the model for a 230 volt unit. Example AQL-12C

