

The redesigned KH series condensing units have the smallest footprint available in the industry. These rugged, highly efficient, reverse cycle units have an integrated drain pan and a removable electric box that can be mounted up to 6' away. With below deck space at a premium in the modern boat, there is a recognizable size benefit in the KH Model which is 32% smaller than the competition. These versatile models can fit snug spaces or can be racked to maximize vertical space, while at the same time presenting more options in cabin space zone temperature control than ever before. These units can be matched to a host of Cooling/Heating units available from Aqua-Air.



KH-05, 07, 10, 12 & 16

KH Series Models:

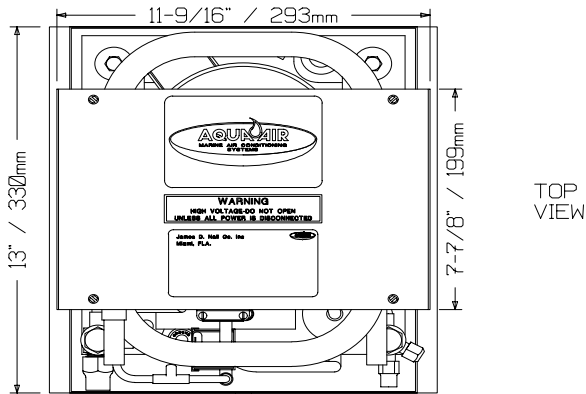
- KH - For use with AQS3 series Thermostat
- KHL - Includes low refrigerant pressure.
automatic reset switch.
- KHT - Matched with the **TW2** Microprocessor
control with digital display panel.
- KHTL - Includes low refrigerant pressure
automatic reset switch.

Standard Features

- < **Smallest footprint available.**
- < **Reverse cycle condensing units in 5-16,000 BTU/H sizes (1,260-4,032 KCAL/H).**
- < **Available in 115-1-50/60 input or 230-1-50/60 input models.**
- < **Dependable reciprocating compressor.**
- < **Seawater condenser constructed of copper outer jacket & 90-10 cupronickel inner tube for corrosion resistance.**
- < **Suction line accumulator for low load compressor protection.**
- < **Electric box contains the start & run capacitors and start relay.**
- < **Electric box can be remote mounted up to 6' (2m) away.**
- < **High refrigerant pressure, automatic reset switch.**
- < **Two sets of rubber isolation mounts for vibration free operation.**
- < **Aluminum drain pan to catch any condensate formed on the unit.**
- < **Plywood mounting base for ease of installation.**
- < **Base valves with Nylon stem caps and brass caps over the charging & access ports.**
- < **Ignition protected construction for use on gasoline powered vessels.**
- < **Can be used in environments up to 140/F (60/C).**
- < **White enamel finish.**
- < **2 year warranty when used with the TW2 microprocessor control.**

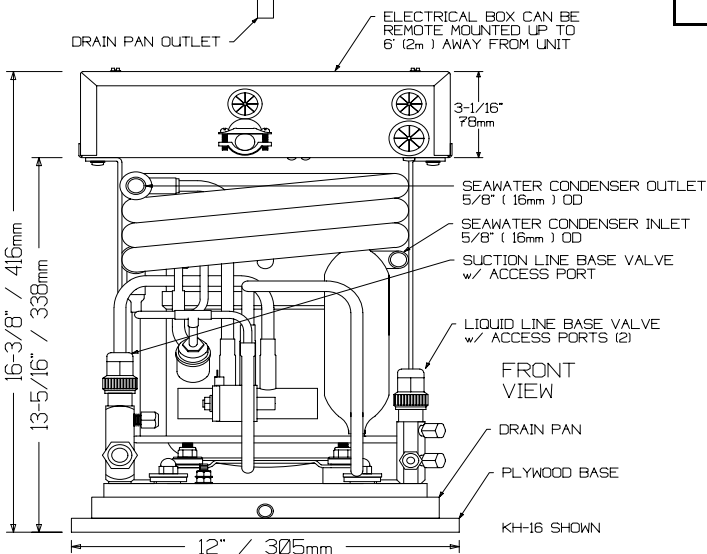
Technical Specifications

Model		KH**- 05	KH**- 07	KH**-10	KH**-12	KH**-16					
Capacity	BTU/H KCAL/H	5,000 1,260	7,000 1,764	10,000 2,520	12,000 3,024	16,000 4,032					
Length	in/mm	13" / 330mm									
Width	in/mm	12" / 305mm									
Height	in/mm with electrical box without electrical box	16-3/8" / 416mm 13-5/16" / 338mm									
Weight	Lbs Kgs	46 21	53 24	64 29	66 30	67 30					
Voltage		115	230	115	230	115	230	115	230		
Amps		5.3	N/A	6.6	3.4	8.6	4.4	9.1	4.9	11.4	5.3
Watts		600		730		940		1050		1150	
Suction Service Valve Connection		3/8" male 45/ flare					1/2" male 45/ flare				
Discharge Service Valve Connection		1/4" male 45/ flare									
Seawater Connections, Inlet and Outlet	in/mm	5/8" / 16mm OD									
Drain connection	in/mm	1/2" / 13mm OD									



Matching Heating and Cooling Units

- AQO - Draw-Thru ductable type
- AQOC - Compact Draw Thru Ductable type
- AQC - Compact Draw-Thru Ductable with Vertical Discharge
- AQB - Compact Blow-Thru type
- AQL - Low Profile Compact Blow-Thru type
- AQB2/AQE - Twin Blower / Low Profile type



I:\wordpfct\80076.wpd

AQUA-AIR MANUFACTURING,
division of the James D. Nall Co., Inc.
1050 East 9th Street, Hialeah, Florida
33010 U.S.A.
Ph. 305-884-8363 Fax 305-883-8549
Email sales@aquair.com