

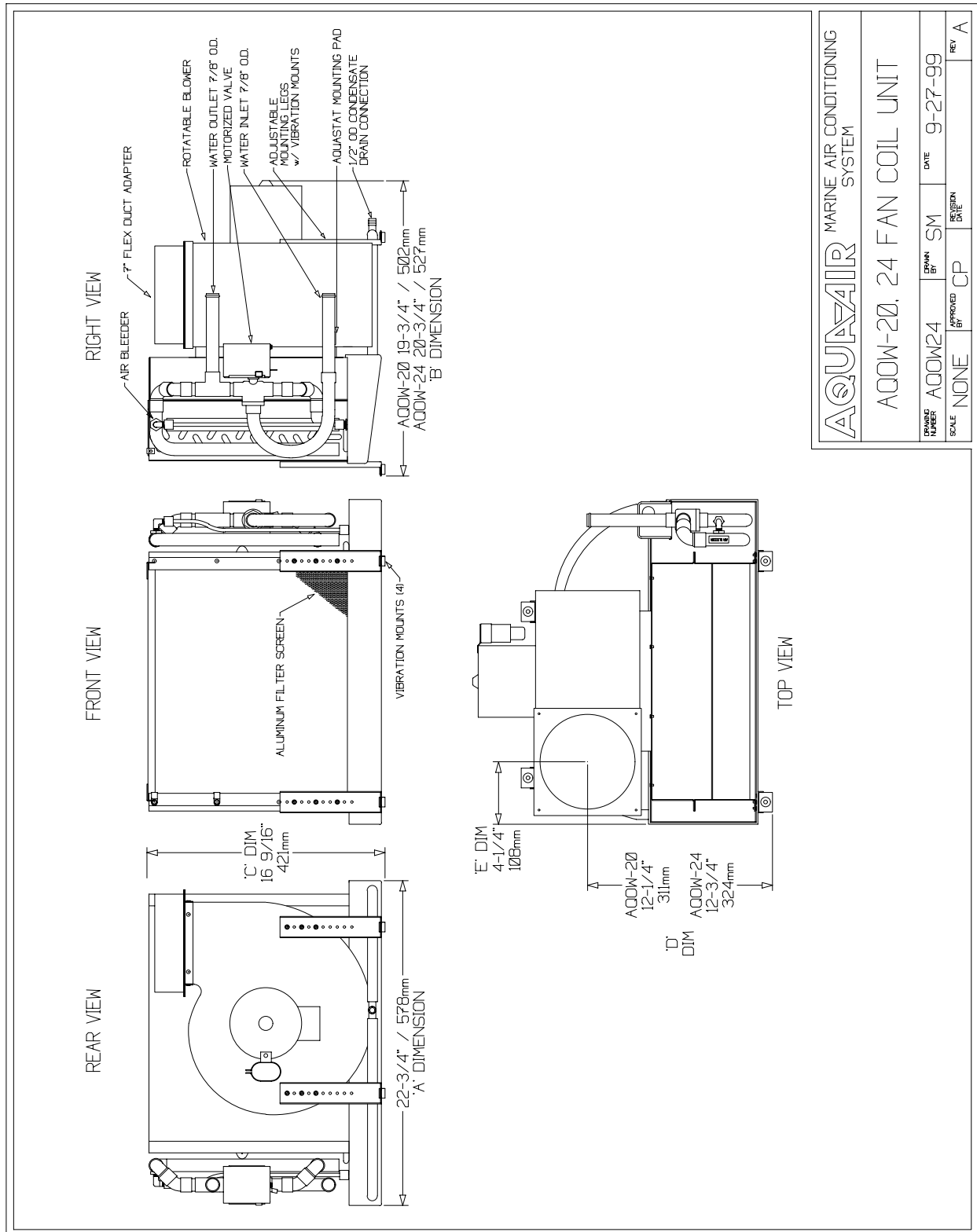


**CHILLWATER FAN COIL    AQOW-20, 24**

## FEATURES

- ' High capacity squirrel cage blower is designed for quiet operation with flexible duct systems.
- ' Standard 7" ( 178mm ) flexible duct connector installed on the unit.
- ' Three way motorized water valve is pre-installed on the unit. A separate valve assembly is not necessary. Valve motor assembly can be easily removed by hand.
- ' Dual condensate outlets on the drain pan are factory connected into a common 1/2" hose barb tee for ease of installation. Sloped drain pan standard.
- ' Vertically adjustable mounting legs with rubber vibration pads and mounting screws.
- ' The air bleeder is mounted on the end of a 12" plastic tube for easy access during commissioning of the system.
- ' All surfaces that might have condensate form on them are covered in 1/8" thick foam insulation.
- ' Units available for 115/1/60 and 208-230/1/60 power inputs.
- ' Aqua-Air BH series blower heaters bolt directly to the discharge of the blower.

| Technical Specifications     |                                   |  |                         |                       |                         |                       |
|------------------------------|-----------------------------------|--|-------------------------|-----------------------|-------------------------|-----------------------|
| MODEL                        |                                   |  | AQOW-20                 |                       | AQOW-24                 |                       |
| Cooling Capacity             | BTU/HR<br>KCAL/HR<br>TONS         |  | 20,000<br>5,040<br>1.67 |                       | 24,000<br>6,048<br>2.00 |                       |
| Air Flow Capacity            | CFM / m <sup>3</sup> /HR          |  | 667                     | 1,131                 | 800                     | 1,357                 |
| Weight                       | LBS / KGS                         |  | 51                      | 23                    | 54                      | 25                    |
| Width                        | A    IN / MM                      |  | 22-3/4                  | 578                   | 22-3/4                  | 578                   |
| Length                       | B    IN / MM                      |  | 19-3/4                  | 502                   | 20-3/4                  | 527                   |
| Height                       | C    IN / MM                      |  | 16-9/16                 | 421                   | 16-9/16                 | 421                   |
| Air Discharge<br>Center Line | D    IN / MM                      |  | 12-1/4                  | 311                   | 12-3/4                  | 324                   |
|                              | E    IN / MM                      |  | 4-1/4                   | 108                   | 4-1/4                   | 108                   |
| Amp Draw                     | 115 / 230    115 / 230            |  | 2.6                     | 1.3                   | 4.0                     | 2.0                   |
| Power                        | WATTS                             |  | 249                     |                       | 380                     |                       |
| Minimum Return Air           | in <sup>2</sup> / cm <sup>2</sup> |  | 180 in <sup>2</sup>     | 1,161 cm <sup>2</sup> | 200 in <sup>2</sup>     | 1,290 cm <sup>2</sup> |
| Minimum Return Air           | in <sup>2</sup> / cm <sup>2</sup> |  | 100 in <sup>2</sup>     | 645 cm <sup>2</sup>   | 120 in <sup>2</sup>     | 774 cm <sup>2</sup>   |
| Chillwater Inlet / Outlet    | IN / MM                           |  | 7/8"                    | 22mm                  | 7/8"                    | 22mm                  |
| Flex Duct Collar             | IN / MM                           |  | 7"                      | 178mm                 | 7"                      | 178mm                 |
| Maximum Heater               | kW                                |  | 3 Kw                    |                       | 4 Kw                    |                       |



|  |         |
|--|---------|
| <b>AQUAIR</b> MARINE AIR CONDITIONING SYSTEM |         |
| ACOW-20, 24 FAN COIL UNIT                    |         |
| DESIGN NUMBER                                | ACOW24  |
| APPROVED BY                                  | CP      |
| DRAWN BY                                     | SM      |
| DATE   | 9-27-99 |
| SCALE  | NONE    |
| REVISION                                     |         |
| REV  | A       |

**AQUA-AIR MANUFACTURING, division of the James D. Nall Co., Inc.**  
**1050 East 9th Street, Hialeah, Florida 33010 U.S.A.**  
**Ph. 305-884-8363 Fax 305-883-8549**