

The Alpha Series Compact Chiller Module is the largest selling chiller in the megayacht industry today. Over the last decade more Alpha's have been installed in yachts than all other brands combined. Since its introduction in 1993 it has constantly evolved. Alpha's shipped today feature 308 stainless steel chassis' and fasteners, scroll compressors and Awlgrip® coatings. What has not changed is the compactness and unrivaled reliability. In recent comparisons to other brands, the Alpha was on an average 22% lighter and 38% smaller in volume. This means major weight and space savings when the units are racked. Alpha's are built in capacities from 24,000 to 72,000 BTU/H ( 19-60,000 BTU/H 50 Hz ) and all share the same chassis dimensions. Should a vessels BTU requirements exceed 72,000 BTU/H, multiple chillers can be racked together for a larger total capacity.



## Features

- ▶ Copeland Scroll compressors
- ▶ Stainless Steel chassis and fasteners
- ▶ Awlgrip® Matterhorn White finish
- ▶ Available in either Reverse Cycle or Cooling Only units
- ▶ Access ports for high and low refrigerant pressure
- ▶ High and low automatic reset refrigerant pressure switches
- ▶ 90-10 Cupronickel seawater condensers
- ▶ Stainless steel plate chiller
- ▶ Electrical box can be remote mounted
- ▶ Honeywell digital temperature controller with integral time delay
- ▶ Freeze prevention thermostat
- ▶ 3 phase units can be used with Variable Frequency Drives ( VFD's )
- ▶ All units performance tested before shipping
- ▶ R-407C environmentally friendly refrigerant

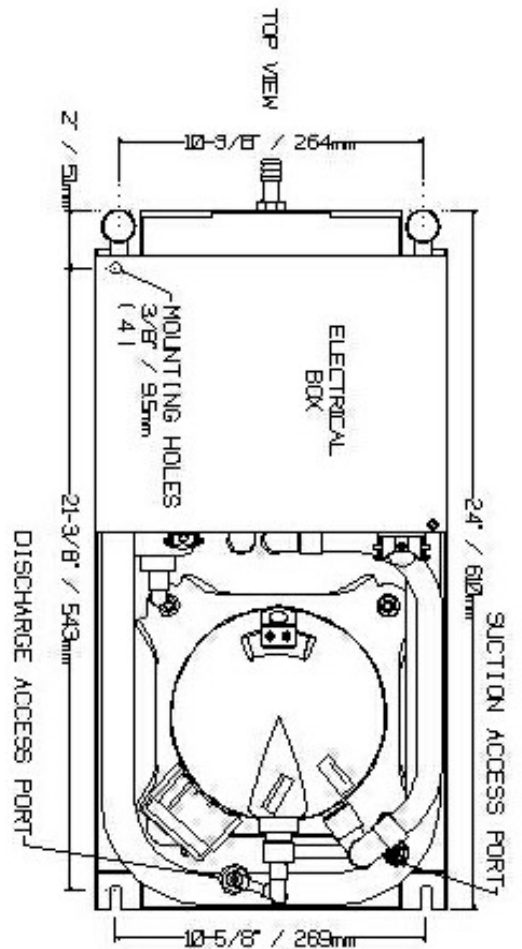
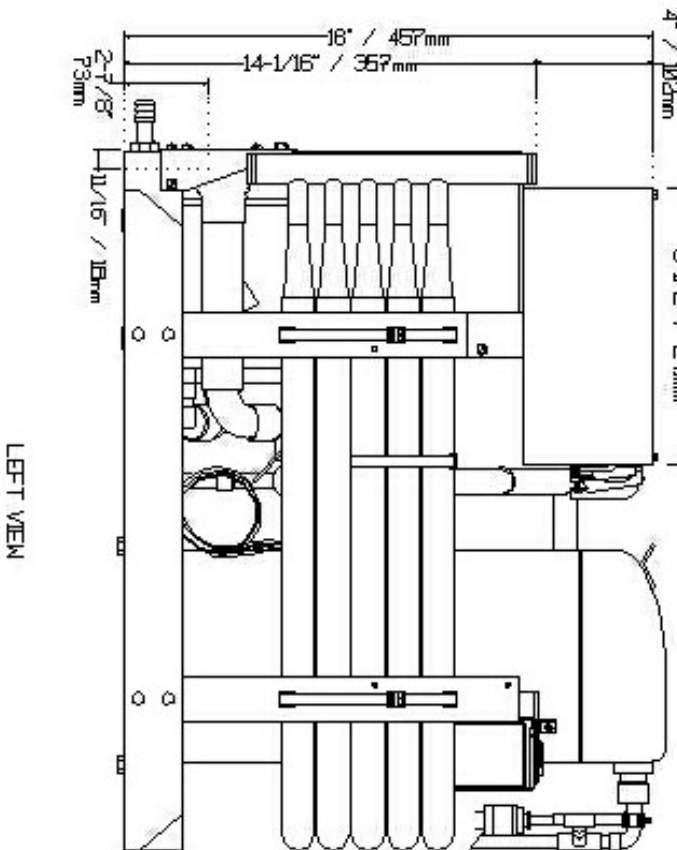
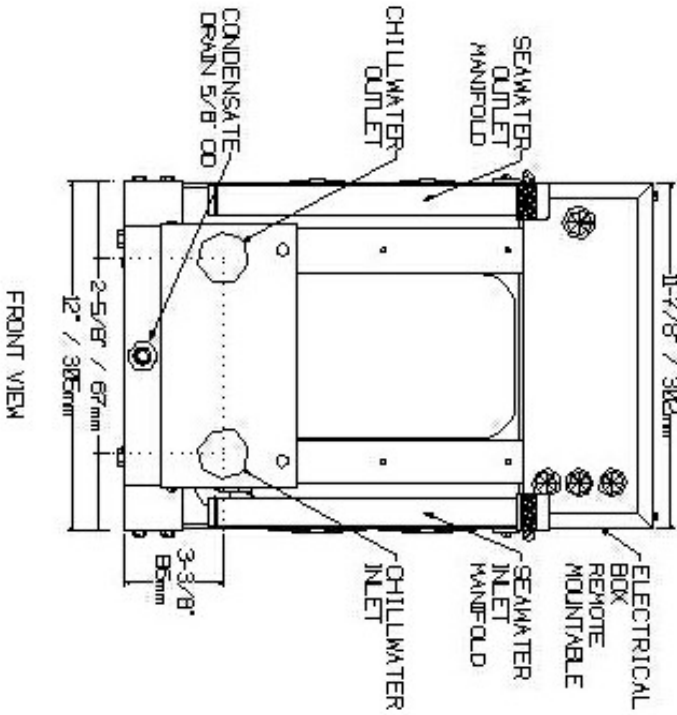
| A | 5 | H | G | D | Model Number Nomenclature           |                    |
|---|---|---|---|---|-------------------------------------|--------------------|
|   |   |   |   |   | C                                   | 208-230 / 1 / 60   |
|   |   |   |   |   | CK                                  | 200-220 / 1 / 50   |
|   |   |   |   |   | D                                   | 208-230 / 3 / 60   |
|   |   |   |   |   | DK                                  | 200-220 / 3 / 50   |
|   |   |   |   |   | E                                   | 440-480 / 3 / 60   |
|   |   |   |   |   | EK                                  | 380-415 / 3 / 50   |
|   |   |   |   |   | G                                   | R-407C Refrigerant |
|   |   |   |   |   | BLANK                               | COOLING ONLY       |
|   |   |   |   |   | H                                   | REVERSE CYCLE      |
|   |   |   |   |   | CAPACITY, IN TONS, AT RATED VOLTAGE |                    |

| Physical Specifications |                 |  |        |     |                           |                         |      |                         |                       |      |
|-------------------------|-----------------|--|--------|-----|---------------------------|-------------------------|------|-------------------------|-----------------------|------|
| MODEL                   | CAPACITY BTU/HR | AVAILABLE VOLTAGES   | WEIGHT |     | CHILLWATER INLET / OUTLET | MINIMUM CHILLWATER FLOW |      | SEAWATER INLET / OUTLET | MINIMUM SEAWATER FLOW |      |
|                         |                 |  | LBS    | KGS |                           | GPM                     | LPM  |                         | GPM                   | LPM  |
| A1.7*                   | 19,920          | 200-220 / 1 / 50   | 140    | 64  | ½" FPT                    | 4.0                     | 15.3 | 5/8" OD                 | 6.8                   | 25.9 |
| A2*                     | 24,000          | 208-230 / 1 / 60<br>208-230 / 3 / 60<br>460 / 3 / 60<br>380-415 / 3 / 50 | 140    | 64  | ½" FPT                    | 4.8                     | 18.3 | 5/8" OD                 | 8.0                   | 31.0 |
| A2.5*                   | 30,000          | 200-220 / 1 / 50   | 157    | 71  | ¾" FPT                    | 6.0                     | 22.9 | 1" OD                   | 10.0                  | 38.1 |
| A3*                     | 36,000          | 208-230 / 1 / 60<br>208-230 / 3 / 60<br>460 / 3 / 60<br>380-415 / 3 / 50 | 157    | 71  | ¾" FPT                    | 7.2                     | 27.4 | 1" OD                   | 12.0                  | 45.8 |
| A3.3*                   | 40,000          | 200-220 / 1 / 50   | 161    | 73  | 1" FPT                    | 7.9                     | 30.1 | 1" OD                   | 13.2                  | 50.3 |
| A4*                     | 48,000          | 208-230 / 1 / 60<br>208-230 / 3 / 60<br>460 / 3 / 60<br>380-415 / 3 / 50 | 161    | 73  | 1" FPT                    | 9.6                     | 36.5 | 1" OD                   | 16.0                  | 61.0 |
| A5*                     | 60,000          | 208-230 / 1 / 60<br>208-230 / 3 / 60<br>460 / 3 / 60<br>380-415 / 3 / 50 | 161    | 73  | 1-1/4" FPT                | 12.0                    | 45.6 | 1" OD                   | 20.0                  | 76.3 |
| A6*                     | 72,000          | 208-230 / 3 / 60<br>460 / 3 / 60   | 165    | 85  | 1-1/4" FPT                | 14.4                    | 54.5 | 1" OD                   | 24.0                  | 90.8 |

\* See Model Number Nomenclature chart above for additional letter codes

| Performance Specifications |          |         |      |              |       |    |                    |               |                       |
|----------------------------|----------|---------|------|--------------|-------|----|--------------------|---------------|-----------------------|
| MODEL                      | CAPACITY |         |      | POWER SUPPLY |       |    | FULL LOAD AMPS FLA | POWER INPUT W | LOCKED ROTOR AMPS LRA |
|                            | BTU/HR   | KCAL/HR | TONS | VOLTAGE      | PHASE | Hz |                    |               |                       |
| A1.7HGCK                   | 19,920   | 4,980   | 1.7  | 200-220      | 1     | 50 | 6.3                | 1158          | 47                    |
| A2HGC                      | 24,000   | 6,000   | 2.0  | 208-230      | 1     | 60 | 6.4                | 1395          | 56                    |
| A2HGD                      | 24,000   | 6,000   | 2.0  | 208-230      | 3     | 60 | 4.9                | 1380          | 45                    |
|                            | 19,920   | 4,980   | 1.7  | 200-220      | 3     | 50 | 4.8                | 1145          | 48                    |
| A2HGE                      | 24,000   | 6,000   | 2.0  | 460          | 3     | 60 | 2.5                | 1380          | 23                    |
|                            | 19,920   | 4,980   | 1.7  | 380-415      | 3     | 50 | 2.4                | 1145          | 24                    |
| A2.5HGCK                   | 30,000   | 7,500   | 2.5  | 200-220      | 1     | 50 | 10.4               | 1872          | 73                    |
| A3HGC                      | 36,000   | 9,000   | 3.0  | 208-230      | 1     | 60 | 10.6               | 2255          | 88                    |
| A3HGD                      | 36,000   | 9,000   | 3.0  | 208-230      | 3     | 60 | 7.6                | 2210          | 77                    |
|                            | 30,000   | 7,500   | 2.5  | 200-220      | 3     | 50 | 7.5                | 1834          | 76                    |
| A3HGDK                     | 36,000   | 9,000   | 3.0  | 200-220      | 3     | 50 | 9.2                | 2450          | 88                    |
| A3HGE                      | 36,000   | 9,000   | 3.0  | 460          | 3     | 60 | 3.8                | 2210          | 39                    |
|                            | 30,000   | 7,500   | 2.5  | 380-415      | 3     | 50 | 3.7                | 1834          | 38                    |
| A3HGEK                     | 36,000   | 9,000   | 3.0  | 380-415      | 3     | 50 | 4.6                | 2450          | 44                    |
| A3.3HGCK                   | 40,000   | 10,000  | 3.3  | 200-220      | 1     | 50 | 11.9               | 2536          | 107                   |
| A4HGC                      | 48,000   | 12,000  | 4.0  | 208-230      | 1     | 60 | 14.4               | 3055          | 129                   |
| A4HGCK                     | 48,000   | 12,000  | 4.0  | 200-220      | 1     | 50 | 15.1               | 3125          | 140                   |
| A4HGD                      | 48,000   | 12,000  | 4.0  | 208-230      | 3     | 60 | 9.3                | 3005          | 120                   |
|                            | 40,000   | 10,000  | 3.3  | 200-220      | 3     | 50 | 9.2                | 2450          | 88                    |
| A4HGDK                     | 48,000   | 12,000  | 4.0  | 200-220      | 3     | 50 | 11.4               | 3005          | 115                   |
| A4HGE                      | 48,000   | 12,000  | 4.0  | 460          | 3     | 60 | 4.7                | 3005          | 60                    |
|                            | 40,000   | 10,000  | 3.3  | 380-415      | 3     | 50 | 4.6                | 2450          | 44                    |
| A4HGEK                     | 48,000   | 12,000  | 4.0  | 380-415      | 3     | 50 | 5.7                | 3005          | 58                    |
| A5HGC                      | 60,000   | 15,000  | 5.0  | 208-230      | 1     | 60 | 18.2               | 3765          | 169                   |
| A5HGD                      | 60,000   | 15,000  | 5.0  | 208-230      | 3     | 60 | 11.6               | 3655          | 137                   |
|                            | 50,000   | 12,500  | 4.0  | 200-220      | 3     | 50 | 11.4               | 3005          | 115                   |
| A5HGDK                     | 60,000   | 15,000  | 5.0  | 200-220      | 3     | 50 | 14.7               | 3615          | 140                   |
| A5HGE                      | 60,000   | 15,000  | 5.0  | 460          | 3     | 60 | 5.8                | 3765          | 85                    |
|                            | 50,000   | 12,500  | 4.0  | 380-415      | 3     | 50 | 5.7                | 3005          | 58                    |
| A5HGEK                     | 60,000   | 15,000  | 5.0  | 380-415      | 3     | 50 | 7.4                | 3615          | 43                    |
| A6HGD                      | 72,000   | 18,000  | 6.0  | 208-230      | 3     | 60 | 13.2               | 4220          | 156                   |
|                            | 60,000   | 14,000  | 4.7  | 200-220      | 3     | 50 | 13                 | 3490          | 172                   |
| A6HGE                      | 72,000   | 18,000  | 6.0  | 460          | 3     | 60 | 6.6                | 4220          | 75                    |
|                            | 60,000   | 14,000  | 4.7  | 380-415      | 3     | 50 | 6.5                | 3490          | 74                    |

# Alpha Series Compact Chiller Dimensions



**AQUA-AIR MANUFACTURING**, division of the James D. Nall Co., Inc.  
 1050 East 9th Street, Hialeah, Florida 33010 U.S.A.  
 Ph. 305-884-8363 Fax 305-883-8549 Email [sales@aquair.com](mailto:sales@aquair.com)  
[www.aquair.com](http://www.aquair.com)