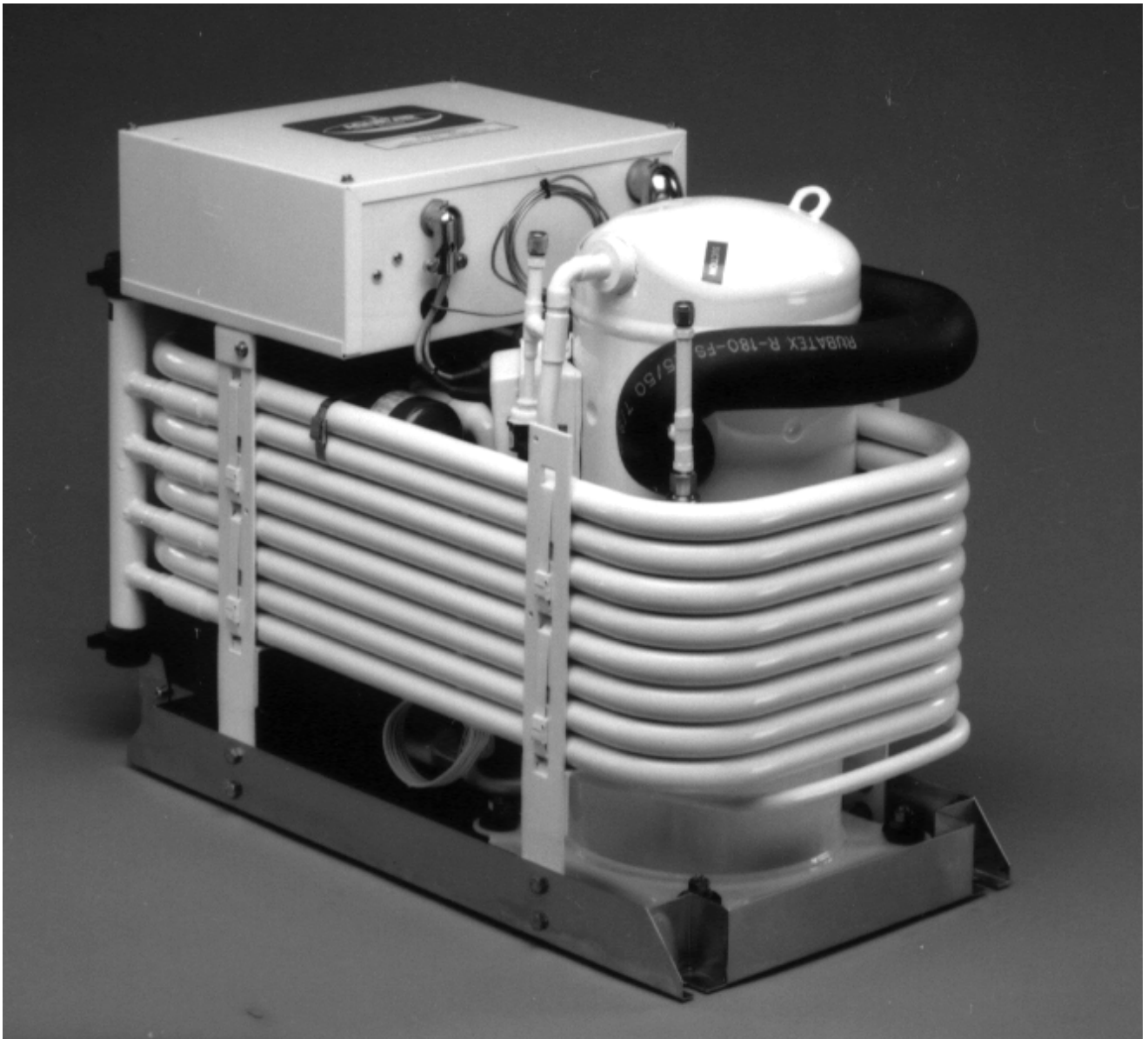


The Alpha Series Compact Chiller Module is the largest selling chiller in the megayacht industry today. Over the last decade more Alpha's have been installed in yachts than all other brands combined. Since its introduction in 1993 it has constantly evolved. Alpha's shipped today feature 308 stainless steel chassis' and fasteners, scroll compressors and Awlgrip® coatings. What has not changed is the compactness and unrivaled reliability. In recent comparisons to other brands, the Alpha was on an average 22% lighter and 38% smaller in volume. This means major weight and space savings when the units are racked. Alpha's are built in capacities from 24,000 to 60,000 BTU/H (19-60,000 BTU/H 50 Hz) and all share the same chassis dimensions. Should a vessels BTU requirements exceed 60,000 BTU/H, multiple chillers can be racked together for a larger total capacity.



Features

- < Copeland Scroll compressors
- < Stainless steel chassis and fasteners
- < Awlgrip® Matterhorn White finish
- < Available in either reverse cycle or cooling only units
- < Access ports for high and low refrigerant pressure
- < High and low automatic reset refrigerant pressure switches
- < 90-10 Cupronickel seawater condensers
- < Stainless steel plate chiller
- < Electrical box can be remote mounted
- < Honeywell digital temperature controller
- < Time delay to prevent simultaneous startup
- < Freeze prevention thermostat
- < 3 phase units can be used with Variable Frequency Drives (VFD's)
- < All units performance tested before shipping

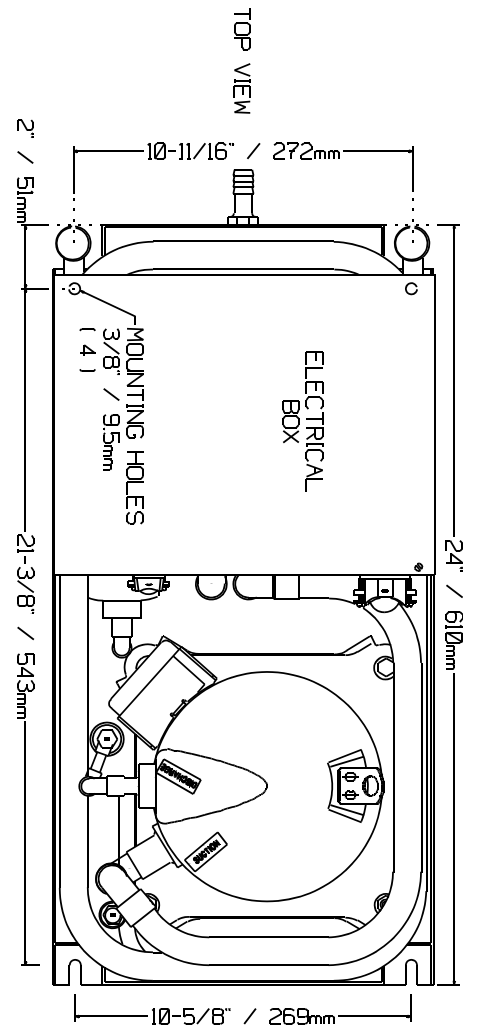
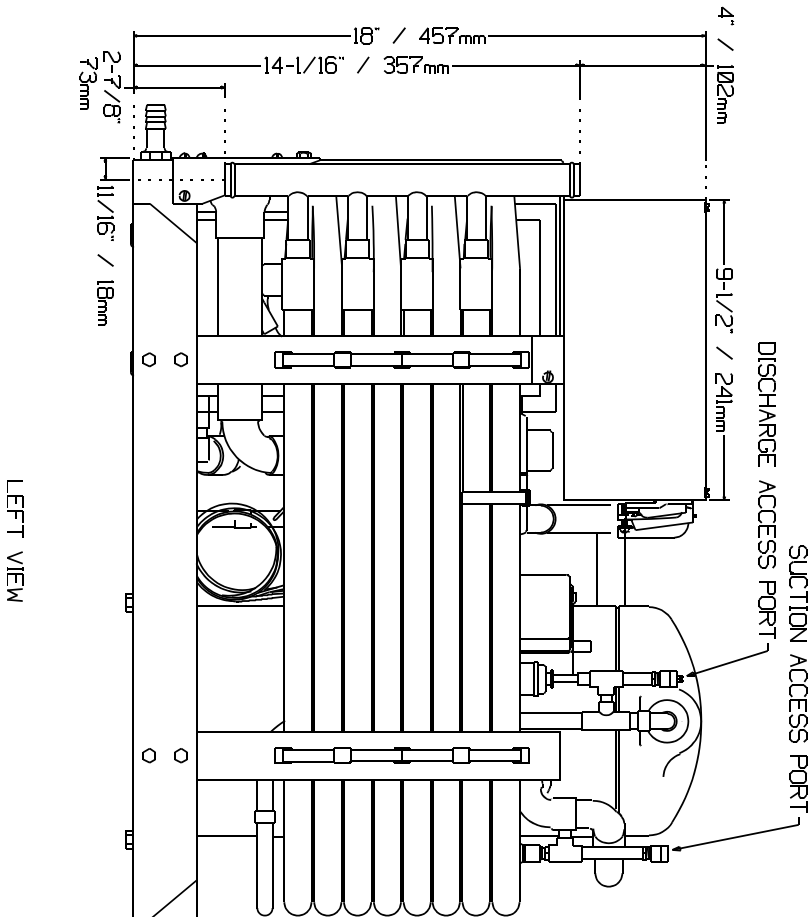
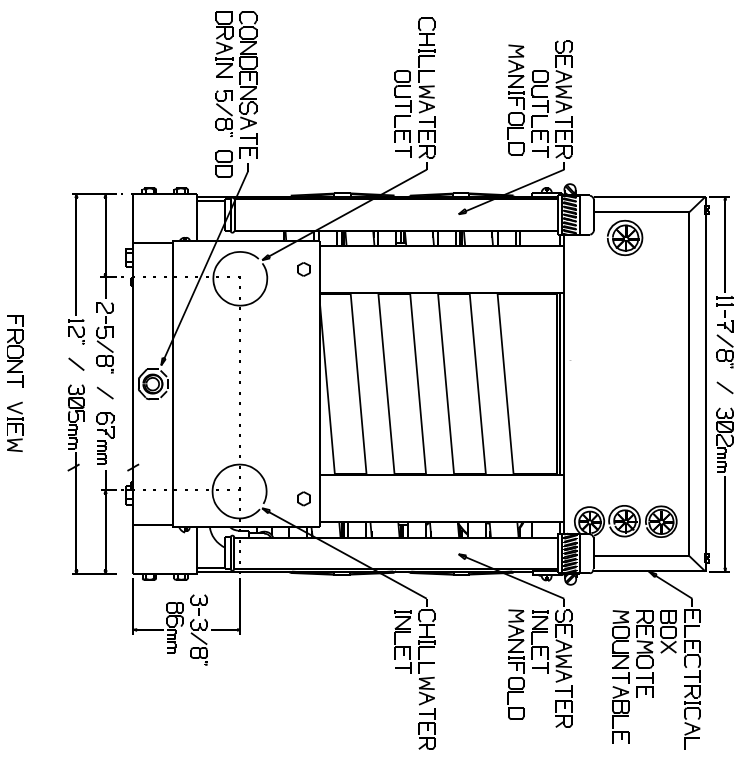
A	5	H	C	Model Number Nomenclature
				C 208-230 / 1 / 60
				CK 200-220 / 1 / 50
				D 208-230 / 3 / 60
				DK 200-220 / 3 / 50
				E 440-480 / 3 / 60
				EK 380-415 / 3 / 50
BLANK = COOLING ONLY H = REVERSE CYCLE				
CAPACITY, IN TONS, AT RATED VOLTAGE				
ALPHA SERIES MODULAR CHILLER				

Physical Specifications										
MODEL	CAPACITY BTU/HR	AVAILABLE VOLTAGES	WEIGHT		CHILLWATER INLET / OUTLET	MINIMUM CHILLWATER FLOW		SEAWATER INLET / OUTLET	MINIMUM SEAWATER FLOW	
			LBS	KGS		GPM	LPM		GPM	LPM
A1.7*	19,920	200-220 / 1 / 50	140	64	½" FPT	4.0	15.3	5/8" OD	6.8	25.9
A2*	24,000	208-230 / 1 / 60 208-230 / 3 / 60 460 / 3 / 60 380-415 / 3 / 50	140	64	½" FPT	4.8	18.3	5/8" OD	8.0	31.0
A2.5*	30,000	200-220 / 1 / 50	157	71	¾" FPT	6.0	22.9	1" OD	10.0	38.1
A3*	36,000	208-230 / 1 / 60 208-230 / 3 / 60 460 / 3 / 60 380-415 / 3 / 50	157	71	¾" FPT	7.2	27.4	1" OD	12.0	45.8
A3.3*	40,000	200-220 / 1 / 50	167	76	1" FPT	7.9	30.1	1" OD	13.2	50.3
A4*	48,000	208-230 / 1 / 60 208-230 / 3 / 60 460 / 3 / 60 380-415 / 3 / 50	167	76	1" FPT	9.6	36.5	1" OD	16.0	61.0
A5*	60,000	208-230 / 1 / 60 208-230 / 3 / 60 460 / 3 / 60 380-415 / 3 / 50	181	82	1-1/4" FPT	12.0	45.6	1" OD	20.0	76.3

* See Model Number Nomenclature chart above for additional letter codes

Performance Specifications									
MODEL	CAPACITY			POWER SUPPLY			FULL LOAD AMPS FLA	POWER INPUT W	LOCKED ROTOR AMPS LRA
	BTU/HR	KCAL/HR	TONS	VOLTAGE	PHASE	Hz			
A1.7HCK	19,920	4,980	1.7	200-220	1	50	6.3	1158	47
A2HC	24,000	6,000	2.0	208-230	1	60	6.4	1395	56
A2HD	24,000	6,000	2.0	208-230	3	60	4.9	1380	45
	19,920	4,980	1.7	200-220	3	50	4.8	1145	48
A2HE	24,000	6,000	2.0	460	3	60	2.5	1380	23
	19,920	4,980	1.7	380-415	3	50	2.4	1145	24
A2.5HCK	30,000	7,500	2.5	200-220	1	50	10.4	1872	73
A3HC	36,000	9,000	3.0	208-230	1	60	10.6	2255	88
A3HD	36,000	9,000	3.0	208-230	3	60	7.6	2210	77
	30,000	7,500	2.5	200-220	3	50	7.5	1834	76
A3HDK	36,000	9,000	3.0	200-220	3	50	9.2	2450	88
A3HE	36,000	9,000	3.0	460	3	60	3.8	2210	39
	30,000	7,500	2.5	380-415	3	50	3.7	1834	38
A3HEK	36,000	9,000	3.0	380-415	3	50	4.6	2450	44
A3.3HCK	40,000	10,000	3.3	200-220	1	50	11.9	2536	107
A4HC	48,000	12,000	4.0	208-230	1	60	14.4	3055	129
A4HCK	48,000	12,000	4.0	200-220	1	50	15.1	3125	140
A4HD	48,000	12,000	4.0	208-230	3	60	9.3	3005	120
	40,000	10,000	3.3	200-220	3	50	9.2	2450	88
A4HDK	48,000	12,000	4.0	200-220	3	50	11.4	3005	115
A4HE	48,000	12,000	4.0	460	3	60	4.7	3005	60
	40,000	10,000	3.3	380-415	3	50	4.6	2450	44
A4HEK	48,000	12,000	4.0	380-415	3	50	5.7	3005	58
A5HC	60,000	15,000	5.0	208-230	1	60	18.2	3765	169
A5HD	60,000	15,000	5.0	208-230	3	60	11.6	3655	137
	50,000	12,500	4.0	200-220	3	50	11.4	3005	115
A5HDK	60,000	15,000	5.0	200-220	3	50	14.7	3615	140
A5HE	60,000	15,000	5.0	460	3	60	5.8	3765	85
	50,000	12,500	4.0	380-415	3	50	5.7	3005	58
A5HEK	60,000	15,000	5.0	380-415	3	50	7.4	3615	43

Alpha Series Compact Chiller Dimensions



AQUA-AIR MANUFACTURING, division of the James D. Nall Co., Inc.
 1050 East 9th Street, Hialeah, Florida 33010 U.S.A.
 Ph. 305-884-8363 Fax 305-883-8549 Email sales@aquair.com