

FEATURES

High Efficiency Components

- Hermetically sealed, high efficiency compressors provide a significant reduction in amp draw.
- Copper encased cupronickel condenser coils are highly resistant to corrosion from continuous seawater flow.
- Expansion device and check valve assemblies control load balancing during unit operation.
- Pressure switches, thermal overloads and start components afford constant system protection and proper operation.

Symmetrical Base Design

- Provides optimum space efficiency and installation flexibility. Allows ease in handling and positioning.

Electrical Box

- Moisture resistant design, corrosion resistant enclosure. Remote mounting capability
CSD units contain the new Passport I/O circuit board.

Integral Base/Drain Pan

- Complete condensation removal with a built-in hose barb. Two sets of vibration isolators ensure quiet operation. Provides for internal fastening within unit footprint.

Quality Assurance

- Each unit is pre-charged, test run in all operating modes and leak checked at the factory prior to shipping.
- All surface components are constructed of or coated with materials resistant to fire and corrosion.
- Charge Guard® protection provides sealed access ports, ensuring environmental protection and system integrity.
- All units meet or exceed applicable ABYC and U.S. Coast Guard regulations, CE directives and general Air Conditioning and Refrigeration Industry (ARI) standards.



SPECIFICATIONS

Model ^{(1) (2)}	CS*6K			CS*9K			CS*12K			CS*16K		
Capacity (BTU/Hr)	6,000			9,000			12,000			16,000		
Voltage (VAC) ⁽³⁾	115	208-230	220-240	115	208-230	220-240	115	208-230	220-240	115	208-230	220-240
Cycle (Hz)/Phase (Ph) ⁽⁴⁾	60/1	60/1	50/1	60/1	60/1	50/1	60/1	60/1	50/1	60/1	60/1	50/1
Refrigerant R-22 or 417A ⁽⁵⁾	either	either	either	R-22	either	either	either	either	either	R-22	either	either
Full Load Amps (FLA) cool	7.0	3.7	4.1	6.4	3.2	4.6	8.4	4.4	5.4	12.2	5.7	7.0
Full Load Amps (FLA) heat	7.7	4.0	4.8	7.2	3.6	5.2	9.2	5.0	6.0	13.5	6.4	8.0
Locked Rotor Amps (Comp) ⁽⁶⁾	34.0	20.0	21.2	40.0	20.0	25.6	50.0	31.0	31.0	75.0	36.0	39.0
K.V.A. (Kilo-Volt-Amps) heat	0.9	0.9	1.2	0.8	0.8	1.2	1.1	1.2	1.4	1.6	1.5	1.9
Max. Circuit Breaker (Amps)	20	10	10	20	10	15	30	15	15	40	20	25
Min. Circuit Ampacity (Amps)	13	8	7	13	7	10	17	10	11	25	12	15
Refrigerant R-22 (oz/kg)	20/0.6	20/0.6	20/0.6	21/0.6	21/0.6	21/0.6	24/0.7	24/0.7	24/0.7	24/0.7	24/0.7	24/0.7
Refrigerant 417A (oz/kg)	22/0.6	22/0.6	22/0.6	n/a	20/0.6	20/0.6	20/0.6	20/0.6	24/0.7	n/a	21/0.6	21/0.6
Base Valves (disch x suction)	1/4" x 3/8"			1/4" x 3/8"			1/4" x 3/8"			1/4" x 1/2"		
Unit Dimensions (in/mm)												
Height ⁽⁷⁾	15.20/386			15.20/386			15.20/386			15.20/386		
Width	13.13/334			13.13/334			13.13/334			13.13/334		
Depth	13.13/334			13.13/334			13.13/334			13.13/334		
Net Weight (lbs/kg) ⁽⁸⁾	56/25.5			64/29.1			66/30.0			66/30.0		
Gross Weight (lbs/kg) ⁽⁸⁾	63/28.6			74/33.6			75/34.0			75/34.0		

(1) BTU and electrical data are based on a 45° F/7.2° C evaporator and 100° F/37.8° C condenser in cool mode, and a 45° F/7.2° C evaporator and 130° F/54.4° C condenser in heat mode.

(2) Add a 'Z' or 'Z50' after the 'K' in the 6K-16K model numbers to denote 208-230V/60Hz or 240-220V/50Hz respectively.

(3) Electrical specifications are for reverse cycle units, straight cool units might use smaller circuit breakers.

(4) Some standard 60Hz units may be operated at 50Hz, at reduced voltages. However, there will be a loss in capacity, and the amp draw may be higher or lower than listed. Dedicated 50Hz units are available that provide full capacity, but these can not be operated at 60Hz. For more information regarding compressor voltages, refer to field notice FN#192-B3 on Dometic Corporation - Environmental Systems' Customer News & Information website.

(5) The designation of "either" indicates that the unit is available in both types of refrigerant and has the same electrical data in either case.

(6) Compressor locked rotor amps (LRA) will vary with voltage and load, and may be higher or lower than listed.

(7) Electrical box height is 2.6"/66mm; subtract that from unit height if box will be remotely mounted.

(8) Weights are based on 60Hz/1Ph equipment.

*D = Elite or Passport I/O Control (CSD), M = Mechanical Control (CSM)

Installation Guidelines for 6K - 16K Condensing Units

When choosing the proper model **Condensing Unit**, primary consideration should be given to calculated BTU loads and available power supply. Special consideration should be given in determining the reverse cycle heating capacities under anticipated conditions. Reverse cycle operation is affected by the seawater temperature. As it decreases, the unit's heat transfer capacity also decreases and proportionately affects the output of warm air. It is not recommended that the unit be operated in the heat cycle with water temperatures below 40°F/4.4°C.

The location of the **Condensing Unit** should be dry and accessible for service, and provide the most direct routing of refrigerant line sets relative to the evaporator location(s). The vibration isolated condensing unit should be secured to a horizontal surface that is designed for the weight of the unit and torsion loads from the vessel's movement.

Refrigerant-grade copper tubing should be properly sized for the specific application. Both the suction and liquid lines should be insulated separately with approved closed cell foam jackets (i.e., 1/4" wall thickness insulation). The refrigerant line ends should remain capped until the actual connections are made to prevent contamination. To prevent kinks in the tubing, which will adversely affect the performance and longevity of the system, tube benders are recommended.

When using multiple evaporators with one condensing unit, locate all unions and tee fittings properly in areas accessible for service. Use approved flaring techniques and refrigerant grade components for all connections.

Insulate fittings using insulation tape (only after system has been leak-checked). Wrap fittings sufficiently to equal R-value of tube insulation. Reinforced marine grade hose should be used for the seawater circuit.

All hose fittings should be double clamped. The hose should be routed upward from the thru hull intake to the condensing unit to prevent air locking. The condensation drain should be connected and routed downward to a proper sump or overboard discharge.

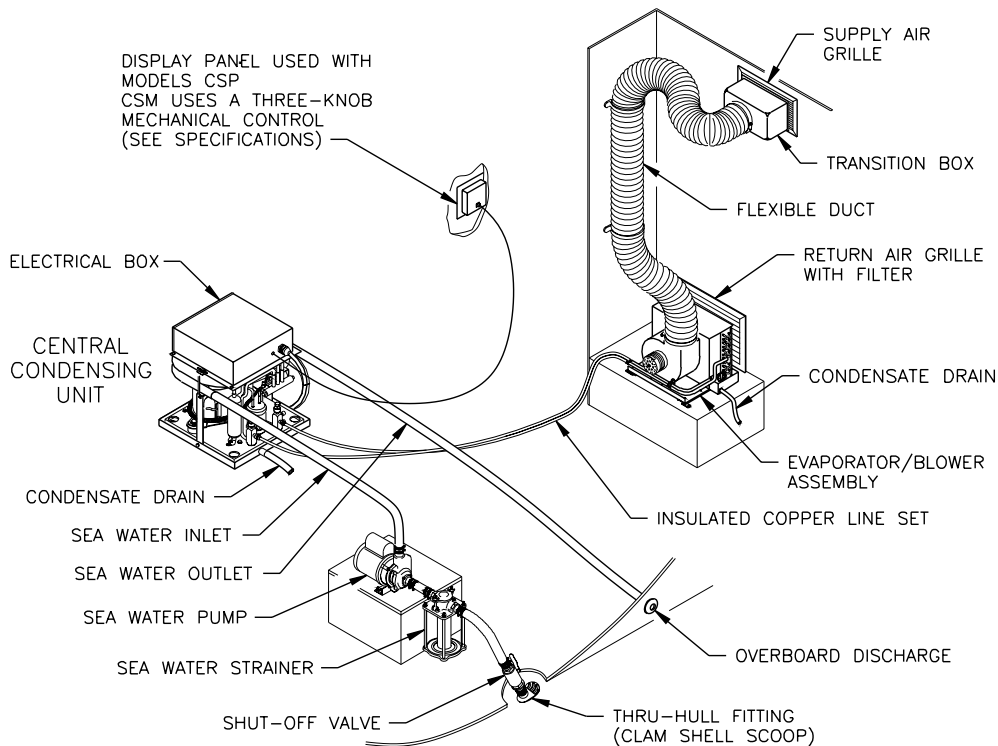
All circuit breakers and wire gauge must be sized according to marine design standards. Only stranded tinned copper wire should be used. All equipment must be properly grounded.

The installed line sets and evaporator(s) must be evacuated to remove air from these components and prevent moisture acidity formation. All connections should be properly leak-checked upon releasing the refrigerant charge from the condensing unit into the system. If the system is to be opened for any reason at this point or for future service, the refrigerant charge must be "pumped down" back into the condensing unit or recovered to prevent it from escaping into the atmosphere.

Refer to other individual component sheets for specifications and details of evaporators, controls and related parts.

In keeping with regulations set forth by the EPA, only certified technicians should perform service on, or make adjustments to, the refrigerant circuit.

Never install your air handler in bilge or engine room areas. Insure that the selected location is sealed from direct access to bilge and/or engine room vapors. Do not terminate condensate drain lines within three (3) feet of any outlet of engine or generator exhaust systems, nor in a compartment housing an engine or generator, nor in a bilge (vapors can travel up the drain line), unless the drain is connected properly to a sealed condensate or shower sump pump. Failure to comply may allow bilge or engine room vapors to mix with the air conditioners return air and contaminate living areas.



In the interest of product improvement, specifications and design as outlined herein are subject to change without prior notice.

Dometic Corporation Environmental Systems

2000 N. Andrews Ave. Ext. • Pompano Beach, FL 33069-1497 USA
Phone: 954-973-2477 • Facsimile: 954-979-4414

P.O. Box 15299 • Richmond, VA 23227-0699 USA
Phone: 804-746-1313 • Facsimile: 804-746-7248

Fleets Industrial Estate • 26 Willis Way • Poole, Dorset BH15 3SU, England
Phone: +44(0)870 3306101 • Facsimile: +44(0)870 3306102

Email: sales@marineair.com • Website: www.marineair.com

Revised: 07-21-04 L-2125

Sold and Serviced by: